



ST. LOUIS CHAPTER
MISSOURI SOCIETY OF
PROFESSIONAL ENGINEERS



2020 National Engineers Week Celebration at the Saint Louis Science Center

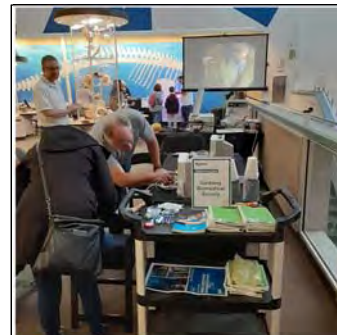
The **Missouri Society of Professional Engineers (MSPE)** St. Louis Chapter cohosted the SciFest Engineering Expo held Saturday, February 22, 2020 from 9:30 a.m. to 4:30 p.m. at the Saint Louis Science Center in celebration of National Engineers Week (EWeek). A variety of engineering fields were represented by organizations, government agencies, companies, and colleges.

Engineering societies present during the EWeek event in addition to MSPE included the **American Society of Civil Engineers (ASCE)** with their pipe cleaner structures and cable-stayed bridge. **Gateway Biomedical Society (GBS)** had medical equipment and a hands-on squash dissection using a surgical scope. **National Society of Black Engineers (NSBE)** had snap circuit demonstrations. The **Society of American Military Engineers (SAME)** Saint Louis & Scott Field Post demonstrated a catapult and guided robots.

ASCE:



GBS:



NSBE:

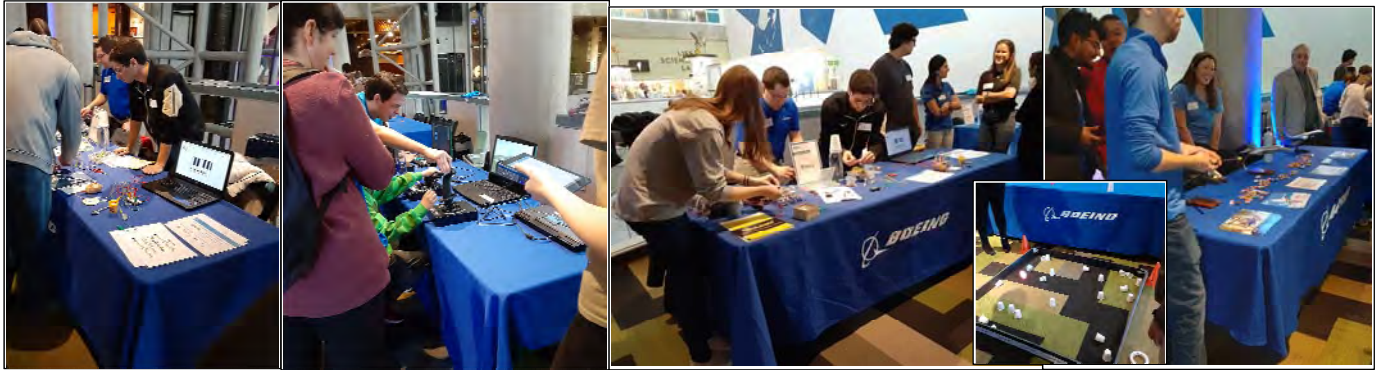


SAME:



Boeing brought a variety of hands-on activities including a miniature flight simulator, completing the circuit, and cup bowling robot. **Geotechnology** displayed their interactive ground penetrating radar. **IMEG** showcased an Oculus Quest VR head set for visitors to use to explore the International Space Station and the **United States Army Corps of Engineers** brought several hands-on models including their water sediment transport model and levee protection model in addition to making life preservers.

Boeing:



Geotechnology:



IMEG



U.S. Army Corps of Engineers:



The **Baryons 5119 FIRST Robotics Team** had this year's competition robot doing tricks. **Greater St Louis Flight Instructors Association (GSLFIA)** displayed photos and videos of various aircrafts. **St. Louis Space Frontier** demonstrated photobioreactors and centrifugal forces. The **Saint Louis Zoo** displayed the engineering they do for their animals.

Baryons 5119



GSLFIA



Space Frontier:

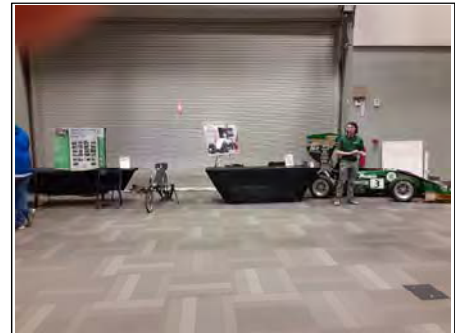
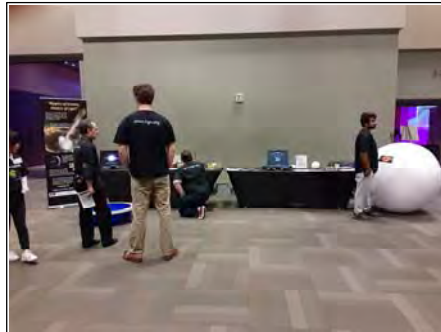
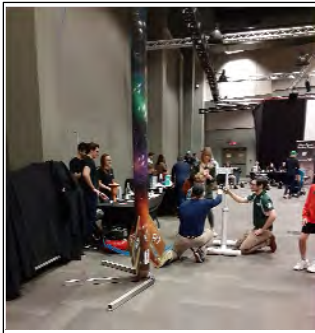


Zoo:



Several universities participated this year at the Science Center. **Missouri University of Science and Technology (Missouri S&T)** had a variety of their Student Design Center teams and hands-on activities. **Southern Illinois University Edwardsville (SIUE)** displayed their Cougar Baja Car in which kids could climb into and pretend they were racing with the best, and their **SIUE ASCE** student chapter simulated earthquakes with their shake table. **Saint Louis University's (SLU) Parks College** showcased their drones. **Southwestern Illinois College (SWIC)** represented their aviation degree and credentials program. **Spectra** from **Washington University (Wash U)** demonstrated thermal imaging, **Lew Lab** painted with light using spectrophotometry and **Women in STEM** had playdough brain imaging. **Maryville Science and Robotics Program** displayed miniature robots created from their Science and Robotics Program.

Missouri S&T:



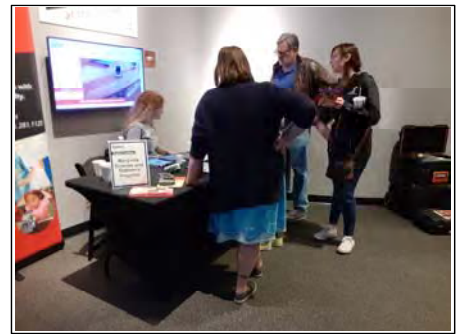
SIUE:



SIUE-ASCE:



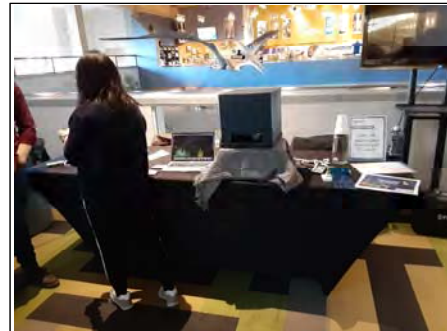
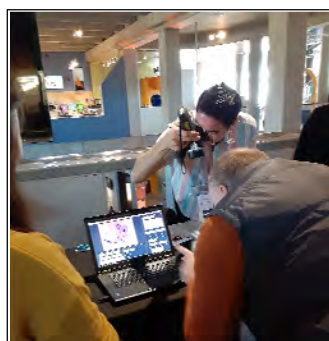
Maryville:



Wash U – Spectra:



Wash U – Lew Lab:



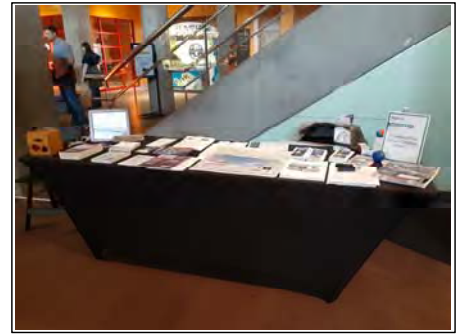
Wash U – Women in STEM:



SLU Parks College:



SWIC:



The **MSPE** exhibit was located near the entrance of the Science Center next to the registration table and intrigued many throughout the event. It was comprised of a ramp, a ball at the top of the ramp, office supplies, and a Buzz Light-year figurine. The objective was to have participants build a structure out of the given supplies to protect Buzz Light-year, located at the bottom of the ramp, from being knocked over by the ball (a.k.a. the asteroid) that rolled down the ramp. The activity was popular with all age groups, and a variety of solutions were discovered.



MSPE:



A special thanks to these volunteers who made the MSPE exhibit a success: **Michael Buechter, Lisa Cheng, Dana Halladay, Haripriya Naidu, Kelly Sextro, & Kyle Williams.**

EWeek is nationally recognized and concluded in St. Louis, MO with the close of the Saint Louis Science Center (SLSC). Attendance was recorded Saturday with 4,175 people. Thanks to our Science Center contacts **Ruth Watt** for making the SciFest Engineering Expo at the SLSC in celebration of National EWeek a smooth and successful operation. We are looking forward to next year's National EWeek celebration at the SLSC scheduled for **February 27, 2021!**

- Erin Jearls, MSPE